

THE EVENING RISE

March 2017

Issue: 193

Official Publication of the Mornington Peninsula Fly Fishers Inc.

Established: 1998



Find us on:
facebook®

MPFF Mission Statement

To promote, foster and encourage the art of fly fishing in all its aspects.

To promote, foster and encourage the art of fly tying.

To promote, foster and encourage the sport of fly casting.

To increase the pleasure derived by members from their sport by social intercourse, interchange of ideas and by collective or mutually assistive action generally.

To promote and assist in the stocking with trout and other sporting fish, of local and other waters.

To foster and promote the conservation of the environment on which the sport of fly fishing is practised and to assist scientific and practical research in all matters pertaining to the sport.

To do all such other things that are incidental to or conducive to the attainment of these purposes and for the exercise of the power of the club.



PRESIDENTS LINE

Greetings fellow fly flickers

“Its time” - not the political slogan but the phone call from the editor again. Bugger, what can I write about this month!

My good lady reminded me that our recent casting day should not go without mention.

The committee was overwhelmed by the turnout on the day, and it was not to fish but to practice, and pass on tips to others on how to get that pesky fly to go in the direction that the operator had directed it to go.

Lee Trevino made the great quote “that the more I practice the luckier I get.” Lets hope in the future that we can share our casting knowledge together and get a little bit luckier

Hope to catch up with you on the water somewhere, some time soon.

Regards, Russ Johnson.



CLUB CONTACT DETAILS

President:	Russell Johnson	russj.john@gmail.com
Vice President:	Steve Darnell	stevewd2000@yahoo.com
Secretary:	Ian Herron	iherron@bigpond.net.au
Treasurer:	Robert Fisher	rfisher1251@bigpond.com
Website:	www.mpff.org.au	
	P.O. Box 848, Frankston, VIC. 3199	

CLUB REMINDERS

FLY TYING

Sunday April 2nd @ Bob Fisher's

COMMITTEE MEETING

Thursday 13th April 6.30 pm

CLUB MEETING

Thursday 23rd March @ Wranglers

AT THE MEETING

***Devilbend Watercraft response to
request for submissions***

FOR YOUR DIARIES

- ***Club Trip Big River / Taponga
Friday-Sunday March 24th/26th***
- ***Club Trip Caringal Scout Camp
Friday-Sunday April 28th/30th***

SHOT OF THE MONTH

LAST MEETING

Great to hear of everybody's fishing activities over the Xmas break. Reports were positive about fishing conditions in our nearby rivers.

Great feedback about the Tassie trip and further info about fishing in NZ added to a night of positive fishing tales.

Tom Camp reported on the latest developments at Devilbend -

- Extension to the current fishing platform
- Call for submissions to allow non-powered watercraft on Devilbend

We also welcomed three new members:

Andrew Sargent, Daniel Wang, and Adrian Hughes

THIS MEETING

We have a number of items to discuss and plan for:

- We need individual members to respond to Parks request for submissions to allow water craft on Devilbend - see draft response in this news.
- The attendees list for Big River must be finalised for submission to Eildon Lions when the key is collected.
- Upcoming Club activities outlined - April Club Trip to Caringal and plans for Tassie 2018.

CLUB MERCHANDISE ON SALE AT MEETINGS

METAL BADGES - suitable for lapel / hat **\$10**

CLOTH BADGES - sew it on your vest / jacket **\$5**

FISHING SHIRTS-- embroidered with club logo **\$50**

POLO SHIRTS - embroidered with club logo **\$25**

STICK-ON DECALS - for your car / boat **\$3 / \$5**



CLUB TRIP — BIG RIVER / TAPONGA



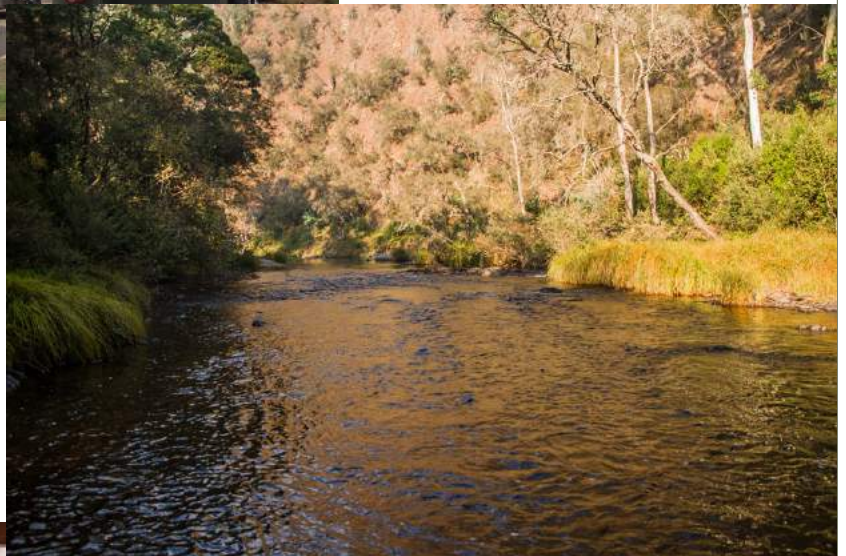
This months Club Trip we return to a once favoured venue for weekend trips— Eildon Lions Club Camp at Big River.

The buildings have undergone an extensive upgrade—especially the kitchen and bunkrooms.

Traditionally , this was the Club's Novice Weekend.

There is excellent fishing available in walking distance from the camp and a short 20 min drive opens even further possibilities.

Wading or fishing from the bank is possible and there are usually fish to be had.



Accommodation is bunkhouse style with a large equipped kitchen and there is also a large patio and BBQ area.

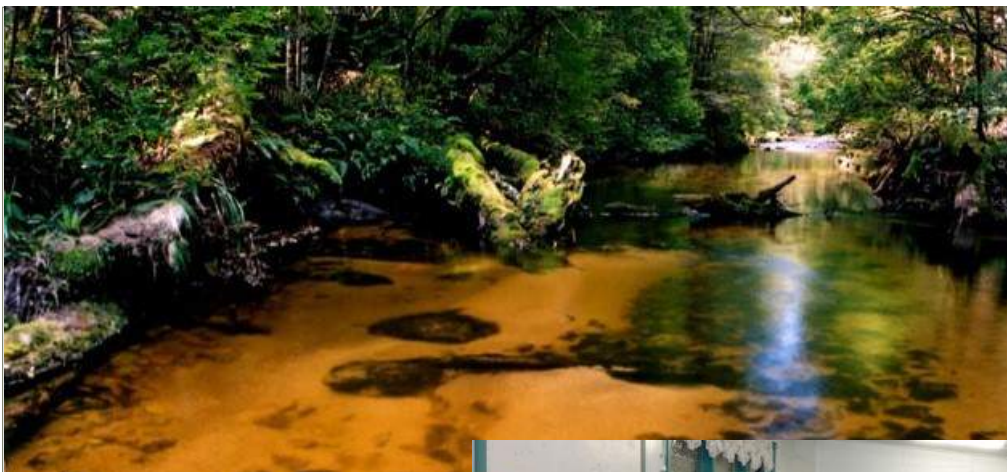
The large dining area and fireplace is a great venue for a get together drink and socialising at the end of each day.

\$25 / head / night.

To get there, follow the Maroondah Highway to Taggerty, turn-off to the right onto Taggerty-Thornton Rd and continue through to Thornton. Turn right onto the Goulburn Valley Highway, then right again onto EildonJamieson Rd—from here the camp is approx. 30 mins drive at the first Big River bridge.



ADVANCE NOTICE— APRIL CLUB TRIP



- Following last year's very successful trip the April Club Trip (weekend April 28th/30th) is once again set down for Tyers River and Erica.

- Accommodation will be at Caringal Scout Camp LOT 4E Telbit Road, Caringal VIC 3825.

- We have booked bunkhouse accommodation and the large mess hall again this year.
- Cost \$25 / head / night.
- Walk to fishing sites—no need to use your car unless you wish to fish other nearby rivers.



DEVILBEND CASTING DAY



A great day and a great roll-up.

Lots of interest and some new members as well!



Update for local residents

Devilbend on-water access for non-powered watercraft

Devilbend Natural Features Reserve
February 2017

Parks Victoria is planning to allow non-powered watercraft such as kayaks and canoes to use a section of Devilbend Reservoir for recreation. In accordance with the Devilbend Natural Features Reserve Management Plan, shore-based fishing is authorised in designated areas while on-water recreation by non-powered watercraft can be considered within the designated Conservation and Recreation Zone only. Parks Victoria intends to amend the zoning in the management plan to allow non-powered watercraft access to a larger section of the reservoir than permitted by the current zoning (see map).

Parks Victoria is inviting park users, residents, stakeholders and the broader community to have their say about how this plan for limited on-water access will be implemented, including the area and types of watercraft permitted, as well as the location and type of launching facilities provided.

Parks Victoria recognises boating, such as canoeing and kayaking as popular activities for visitors to enjoy parks and their natural settings. In keeping with the *Healthy Parks Healthy People* philosophy, providing opportunities such as these activities contributes to the physical, mental and social health benefits of people. On-water access will also provide access to deeper water for fishing, to improve the chances of catching

trout species which have a preference for cooler, deeper water towards the centre of the reservoir, particularly in summer.

Devilbend Natural Features Reserve is of high conservation significance and the 243 hectare Devilbend Reservoir is recognised as an Important Bird Area (IBA). This means it is an area recognised by BirdLife International as being globally important for the conservation of bird populations, supporting over 1% of the global population of the Blue-billed Duck which is listed as threatened under the Flora and Fauna Guarantee Act 1988.

A Discussion Paper and other background documents are available at parks.vic.gov.au to stimulate thinking about on-water access. You may choose to respond directly to the issues presented in the Discussion Paper or make a general comment on the topic.

You can

- Contact Parks Victoria on 13 1963 for further information or to comment verbally
- Email your thoughts and ideas to melbournecommunity@parks.vic.gov.au - please include "Devilbend" in the subject line
- Submit a response by post to Bill Mallinson, Parks Victoria, 2 Hinton St, Rosebud, 3939
- Contact Bill Mallinson, Ranger in Charge Park Services, South East Melbourne on 13 1963 if you would like to discuss this matter further.

Your feedback is important and you are encouraged to provide your comments by Friday 24 March 2017

PLEASE MAKE AN INDIVIDUAL RESPONSE

The bigger our response—the more likely we get a favourable outcome!!!!

DEVILBEND WATERCRAFT LETTER

RE: Support for Devilbend on-water access for non-powered watercraft

I write on behalf of Mornington Peninsula Fly Fishers Inc. (MPFF), who has had a long and sustained interest in the development of Devilbend Natural Features Reserve. The Club has staunchly promoted the reserve as a valuable community asset to a wide audience. We acknowledge that the reserve is an important bird habitat as well as a potentially great fishery. We strongly believe that current park usage affirms that a variety of activities can be supported by the reserve.

As proud supporters of Devilbend we are excited at the proposal to allow non-powered watercraft access. We are pleased that the appropriate research by the Arthur Rylah Institute supported this limited access pending further evaluation of its effect on the resident bird population.

In support of this submission MPFF make the following points:

- Members currently use float tubes (photo) and kayaks on lakes in Victoria and Tasmania in pursuit of the elusive trout. In most of these locations there are significant numbers of native birds on the water who are largely undisturbed by our presence.
- The safety features of these craft include high buoyancy and members wear approved PFD's.
- These watercraft present a low profile on the water surface – thus they are less like to disturb the bird population.
- They will provide the opportunity for members to get beyond the weeds and access deeper water where we believe the current stocked trout population can be found – especially in the warmer months.
- The transport of these craft from the car-park to the proposed launching site should ensure that only the committed users of these craft will access the water.
- MPFF supports “catch and release” so members will be engaging in their hobby in a responsible and conservatory way.
- We regularly hold public casting days at the reserve and would see the opportunity to display our watercraft and their use as a useful example for the general public.



We also acknowledge and commend Parks Victoria for proposing this initiative in line with the 2010 Management Plan and allowing the opportunity for improved opportunities for all users.

Yours faithfully,

Russ Johnson

Russell Johnson

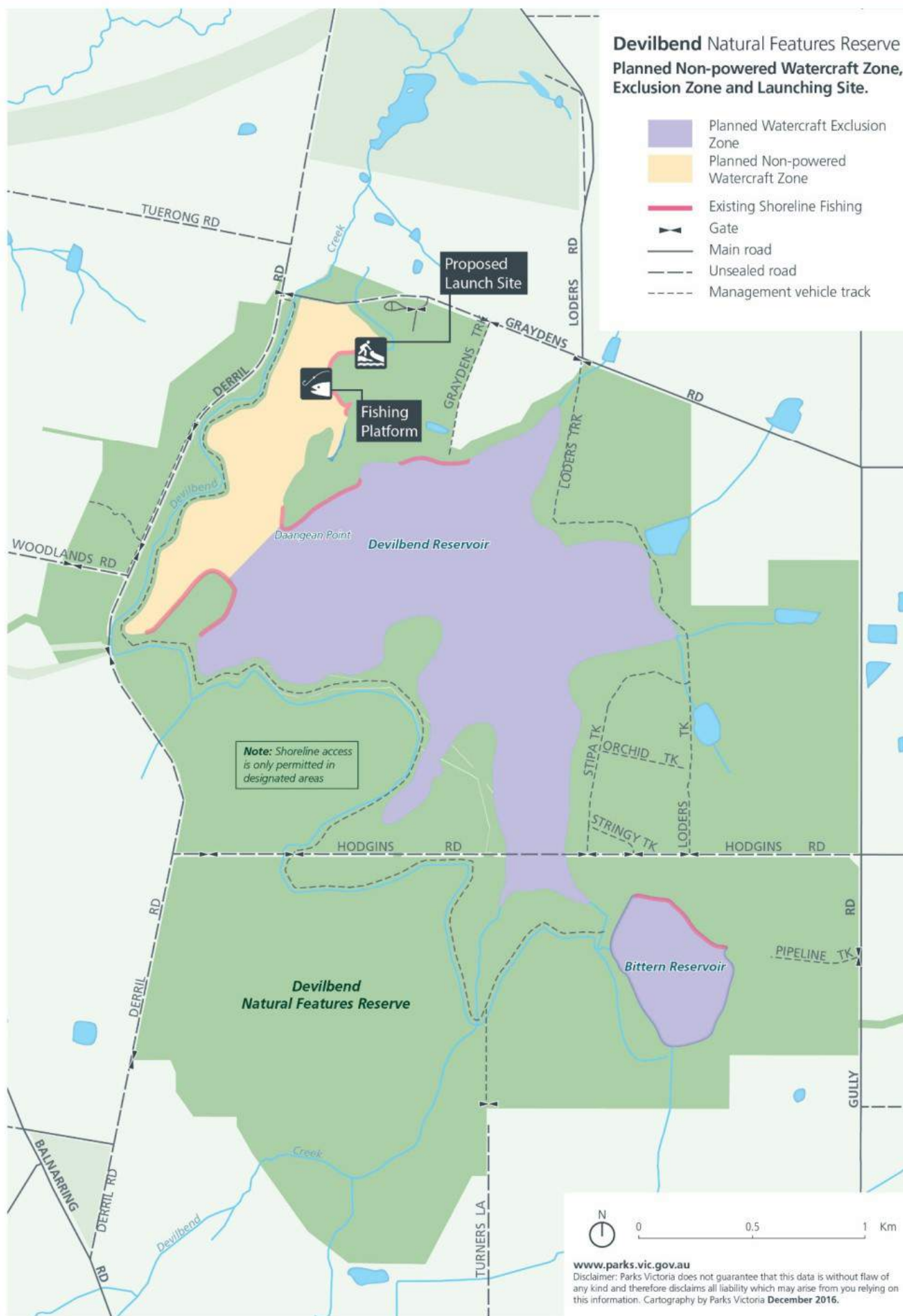
President

Mornington Peninsula Fly Fishers

DEVILBEND ON-WATER ACCESS—PLANNED ZONE

Devilbend Natural Features Reserve Planned Non-powered Watercraft Zone, Exclusion Zone and Launching Site.

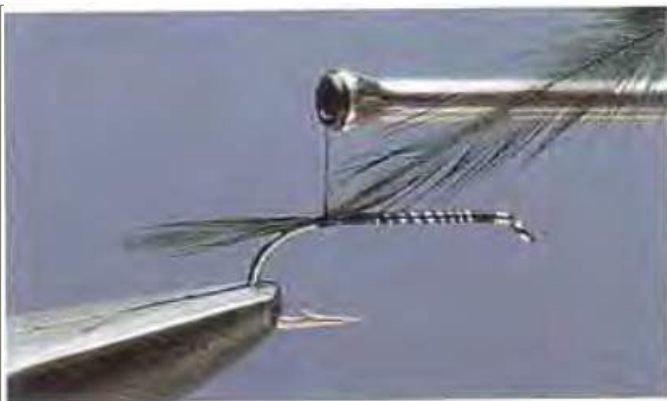
- Planned Watercraft Exclusion Zone
- Planned Non-powered Watercraft Zone
- Existing Shoreline Fishing
- Gate
- Main road
- Unsealed road
- Management vehicle track



www.parks.vic.gov.au

Disclaimer: Parks Victoria does not guarantee that this data is without flaw of any kind and therefore disclaims all liability which may arise from you relying on this information. Cartography by Parks Victoria December 2016.

FROM THE FLY TIERS DESK — BI-VISIBLE



1 Fix the hook in the vise and run the tying thread on at the eye. Wind the thread in close turns, stopping at a point opposite the barb. Here, catch in a black cock hackle point as the tail.



2 Next, select another black cock hackle with fiber length approximately twice that of the hook gape. To judge this correctly, bend the hackle stem slightly. This will flare the hackle fibers and allow their length to be seen more easily.



3 Having selected the right size of hackle, remove any soft or broken fibers from its base and catch it in just in front of the tail. Grasp the hackle tip with a pair of hackle pliers and wind it up the shank in touching turns.



4 Once the hackle has been wound, fully secure the loose tip with turns of thread and remove the excess. Add further hackles in the same way, until three-quarters of the hook shank has been covered.



5 Select a pure white cock hackle with fibers slightly longer than those of the black hackles. Prepare this and catch it in just in front of the black hackles. Wind on close turns up to the eye.



6 Secure the hackle tip with turns of thread before removing the excess. Build a small, neat head and cast off the thread.

SHOT OF THE MONTH



**Bob Fisher's
Penstock Rainbow**

OUR MAJOR SPONSOR

Hurley's
FLY FISHING



- Our goal is to bring you top quality fly fishing tackle at the very best prices.
- Our prices are 30-50% less than retail for similar quality products, and within reach of the person who it matters most to....you!
- The difference is ours don't come with the same high price tag.



Find us on:
facebook®